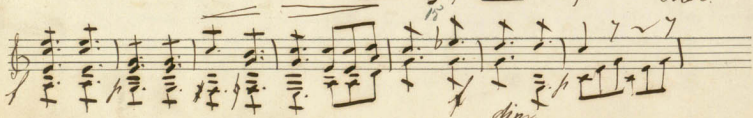
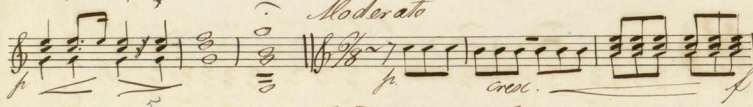
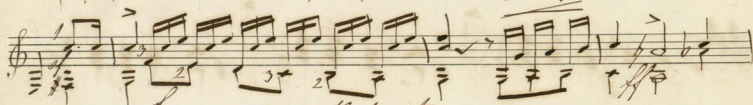
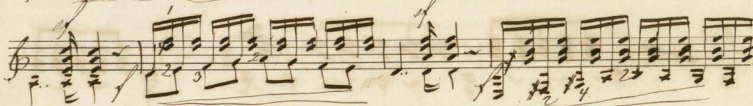
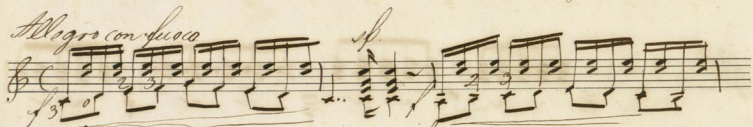
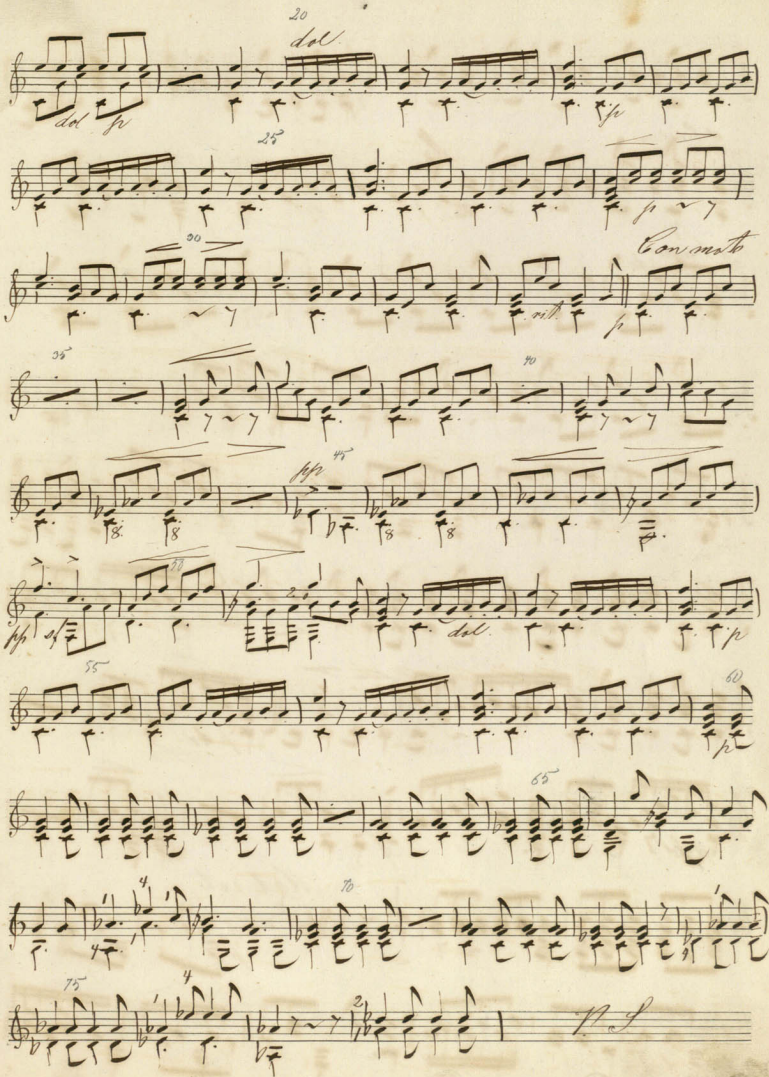


Alessandro Stradella No. 9 J. H. Merz op. 51. 1. 1.



Handwritten musical score on ten staves. The score includes various musical notations such as notes, rests, and dynamic markings. Key markings include *20*, *25*, *30*, *35*, *40*, *45*, *50*, *55*, *60*, *65*, *70*, and *75*. Dynamic markings include *del*, *pp*, *rit*, and *ff*. A section is marked *Con moto*. The score concludes with a double bar line and the initials *H.S.*



Handwritten musical score on ten staves. The notation includes treble clefs, various time signatures (including 3/8 and 2/8), and complex rhythmic patterns. Dynamics such as *ppp*, *pp*, *mf*, *f*, and *ppp dol.* are used throughout. Performance instructions include *ad libitimo*, *rit.*, *alleg.*, *lento*, *a tempo*, and *Moderato*. Measure numbers 85, 90, 95, 100, 105, 110, 115, 125, and 131 are clearly marked. The score concludes with a key signature change to two flats and a 2/8 time signature.

10
3

20
35

20 *Andante Serenade* 50

10

15 20 2

25 30

mf *dol.* 35 *a tempo* 40

43

Handwritten musical score, first system (measures 1-50). The notation includes treble clef, a key signature of one flat, and a 7/8 time signature. The music features a complex rhythmic pattern with frequent sixteenth and thirty-second notes. Measure numbers 5, 10, 20, 30, 40, and 50 are clearly marked. The word *dol* (dolce) is written above the staff at measure 30. The system concludes with a double bar line and a fermata over the final chord.

Handwritten musical score, second system (measures 51-75). The tempo marking *Allegro* is written at the beginning of the system. The notation continues with similar rhythmic complexity. Measure numbers 55, 60, 65, and 75 are marked. The word *And* (Andante) is written above the staff at measure 65. The system concludes with a double bar line and a fermata over the final chord.

30
35
40
43
fine

variazioni von D. C. L. Hamme

Thema Andante

3/4
r. stard.
a tempo
r. stard.

à tempo

dol

Dolce

p

Allegro con fuoco *Ters. Guitare*

Alessandra Bradiella No. 9. F. C. Nottbohm op. 51

p

mf

cresc

Moderato

p

cresc

mf

cresc

dim

p

dol

p

Handwritten musical score for a single melodic line on a grand staff. The score consists of ten staves of music. It features various musical notations including treble clef, key signature of one sharp (F#), and time signature of 3/4. The music includes dynamic markings such as "dol.", "Cresc. Molto", "p.", and "f.". There are also performance instructions like "ritard." and "rit.". Measure numbers are written below the staves at intervals: 25, 30, 40, 50, 60, 70, and 80. The notation includes eighth and sixteenth notes, rests, and slurs. The handwriting is in dark ink on aged paper.

Handwritten musical score on aged paper, featuring ten staves of music. The score includes various musical notations such as notes, rests, and dynamic markings. Key annotations include:

- Measure 80: *loco*
- Measure 85: *loco*
- Measure 95: *rit.*
- Measure 105: *p*
- Measure 110: *X*
- Measure 120: *X*
- Measure 125: *Moderato*
- Measure 130: *p dol*
- Measure 131: *2*
- Measure 132: *3*
- Measure 133: *4*
- Measure 134: *5*
- Measure 135: *6*
- Measure 136: *7*
- Measure 137: *8*

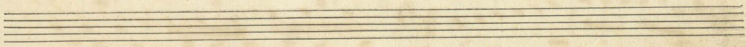
Handwritten musical score consisting of ten staves of music. The notation includes treble clefs, various rhythmic values, and dynamic markings. The score is divided into sections by measure numbers and tempo markings.

Measure numbers: 10, 15, 20, 24, 27, 30, 35, 40, 43.

Tempo markings: *Andante Cremato*, *Andante*, *Andante*.

Dynamics: *f*, *mf*, *pp*, *ppde*, *dol*.

Other markings: *V*, *0*, *15*, *2*, *42*, *10*, *2*, *15*, *10*, *20*, *35*, *dol*, *30*, *40*, *43*.



Handwritten musical score for a piano piece, consisting of ten staves of music. The score is written in a single system with ten staves. The key signature is one sharp (F#) and the time signature is 3/4. The music is written in a style characteristic of the late 18th or early 19th century. The score includes various musical notations such as notes, rests, and ornaments. Performance instructions are written in italics: *espress.* (expressive) appears on the fourth staff, *dol.* (dolce) on the fifth staff, *Allegro* on the sixth staff, *And.* (Andante) on the seventh staff, *Presto* on the eighth staff, and *brillante* on the tenth staff. Measure numbers 0, 10, 20, 30, 40, and 50 are marked above the staves. The score concludes with a double bar line and a fermata.

Handwritten musical score for guitar, consisting of five staves. The music is in G major and 3/4 time. It features a complex rhythmic pattern with many sixteenth and thirty-second notes. Fingerings are indicated by numbers 1-4. There are several slurs and accents. Measure numbers 25, 30, 35, and 40 are marked. The piece concludes with a double bar line and the word "fine" written in cursive.

Variation von D. C. L. Hummel
Für Guitarre.

Thema Andante

Handwritten musical score for guitar, consisting of four staves. The music is in G major and 3/4 time. It starts with a piano (p) dynamic and a "rall" (rallentando) marking. The piece concludes with a double bar line and the word "Fine" written in cursive.