

*Potpourri al Bagel*

*And.*

Handwritten musical notation on two staves. The first staff contains a series of chords and eighth notes. The second staff contains a sequence of chords with fingerings 4, 3, 2, 1 indicated above them, followed by eighth notes with accents.

*Cadenza.*  
2/4

*Tadantino sempre piano*  
3/4  
p

Handwritten musical notation on a single staff containing a series of eighth notes.

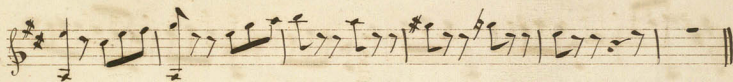
Handwritten musical notation on a single staff containing a series of eighth notes.

Handwritten musical notation on a single staff containing a series of eighth notes.

*Allegro.*  
6/8  
rall.

*pou lento*  
*stretto*

*Adagio*  
3/4  
p



*Barcarole*



*a tempo*



Handwritten musical score for a piece in G major, 2/4 time. The score consists of seven staves. The first staff begins with a treble clef, a key signature of one sharp (F#), and a 2/4 time signature. The music features a mix of eighth and sixteenth notes. The second staff includes the tempo marking "r. all." above the staff and "a tempo" above the end of the staff. The third staff contains a complex rhythmic pattern with many beamed sixteenth notes. The fourth staff is marked "Presto" above the staff. The fifth and sixth staves continue with intricate rhythmic patterns. The seventh staff concludes with a double bar line and the word "fine" written in cursive.

*Le Carnaval de Venise. A Pastorale*  
 op. 62

*Introd. Andantino*

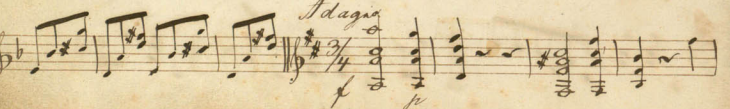
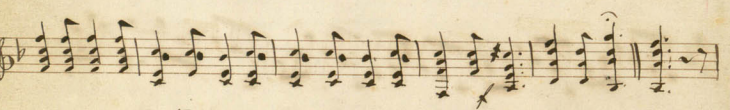
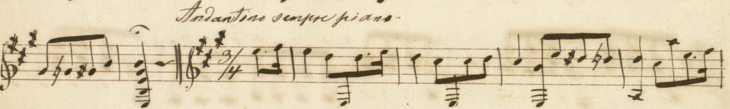
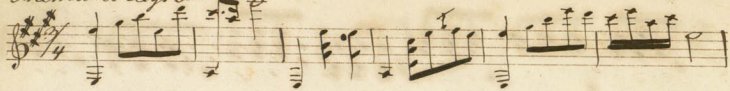
Handwritten musical score for the introduction of "Le Carnaval de Venise". It consists of two staves. The first staff has a treble clef, a key signature of one sharp (F#), and a 6/8 time signature. The music is characterized by a steady eighth-note accompaniment in the left hand and a more melodic line in the right hand. The second staff continues this pattern with similar rhythmic and melodic motifs.

Handwritten musical score for a piece in G major, 2/4 time. It consists of five staves of music. The first four staves feature a rhythmic accompaniment of eighth-note chords. The fifth staff contains a melodic line with a 'fin.' marking at the end.

*Potpourri al. Nagel*

Handwritten musical score for 'Potpourri al. Nagel'. It includes an 'Autod.' section, a 'Tema Allegretto' section with first and second endings, and a final section with first and second endings.

Thema Allegretto



Handwritten musical notation on a single staff, featuring a treble clef, a key signature of two sharps (F# and C#), and a 6/8 time signature. The notation includes various rhythmic values and rests.

Handwritten musical notation on a single staff, continuing the piece with similar rhythmic patterns and rests.

Handwritten musical notation on a single staff, featuring a treble clef and a key signature of two sharps. The tempo marking *calando* is written above the staff.

Handwritten musical notation on a single staff, featuring a treble clef and a key signature of two sharps. The tempo marking *Barcarola* is written above the staff.

Handwritten musical notation on a single staff, featuring a treble clef and a key signature of two sharps.

Handwritten musical notation on a single staff, featuring a treble clef and a key signature of two sharps.

Handwritten musical notation on a single staff, featuring a treble clef and a key signature of two sharps.

Handwritten musical notation on a single staff, featuring a treble clef and a key signature of two sharps. The tempo marking *vall* is written above the staff. The piece concludes with a double bar line and a final cadence.

Handwritten musical notation on a single staff, featuring a treble clef and a key signature of two sharps. The tempo marking *a tempo* is written above the staff.

Handwritten musical notation on a single staff, featuring a treble clef and a key signature of two sharps. The piece concludes with a double bar line and a final cadence. The initials *V.S.* are written at the end of the staff.

Handwritten musical score for "Le Carnaval de Venise". The score consists of seven staves of music. The first staff begins with a treble clef, a key signature of one sharp (F#), and a 6/8 time signature. The music is written in a single melodic line. The second staff features a section marked "Piu lento" in the upper right. The third staff continues the melody. The fourth staff is marked "Presto" above the staff. The fifth and sixth staves contain more melodic notation. The seventh staff concludes with a double bar line and the word "fine" written in a cursive hand.

*Le Carnaval de Venise. I. Adagio op. 62*

*Introd. Andantino*

Handwritten musical score for the introduction of "Le Carnaval de Venise". It consists of two staves of music. The first staff begins with a treble clef, a key signature of one sharp (F#), and a 6/8 time signature. The music is written in a single melodic line. The second staff continues the melody. The score is marked with dynamic markings such as *pp* and *f*.