

Introd et Var sur la Cavatine favorite de l'Opéra Le

Allegro pour la Sustaxe seule par Nap. Coste

Handwritten musical notation on a five-line staff, featuring a treble clef, a key signature of one sharp (F#), and a common time signature (C). The notation includes various rhythmic values such as eighth and sixteenth notes, along with rests and dynamic markings.

Handwritten musical notation on a five-line staff, continuing the piece with similar rhythmic patterns and dynamic markings. The notation is dense with sixteenth-note runs.

Handwritten musical notation on a five-line staff, marked with the tempo instruction *Andante*. The time signature changes to 2/4. A *Rit.* marking is present below the staff.

Handwritten musical notation on a five-line staff, featuring a treble clef and a key signature of one sharp. The notation includes various rhythmic values and dynamic markings.

Handwritten musical notation on a five-line staff, continuing the piece with similar rhythmic patterns and dynamic markings.

Handwritten musical notation on a five-line staff, featuring a treble clef and a key signature of one sharp. The notation includes various rhythmic values and dynamic markings.

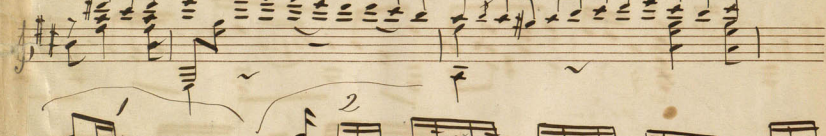
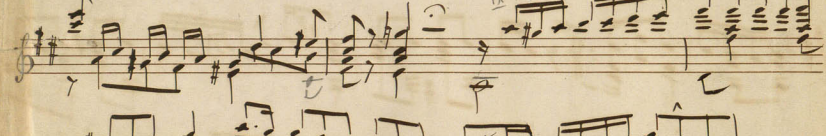
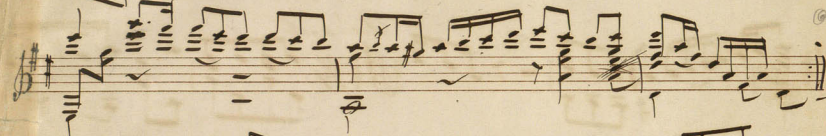
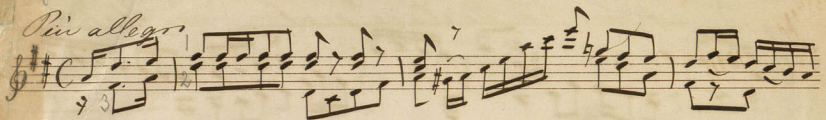
Handwritten musical notation on a five-line staff, marked with the tempo instruction *Andante*. The notation includes various rhythmic values and dynamic markings.

Handwritten musical notation on a five-line staff, continuing the piece with similar rhythmic patterns and dynamic markings.

Op. 2. Vari.

70

Piu allegro



Clarinet 2

Handwritten musical score for Clarinet 2, consisting of seven staves. The music is written in treble clef with a key signature of one sharp (F#) and a common time signature (C). The score includes various musical notations such as notes, rests, and dynamic markings. Above the staves, there are handwritten annotations including "harm.", "Loco", "AIX", "A9", "E9", "A12", "g5", "h5", "VIII", "VII", "bar", "2", "3", "VII", "0", and "18". The notation includes slurs, ties, and some complex rhythmic patterns.

Clarinet 3

Handwritten musical score for Clarinet 3, consisting of two staves. The music is written in treble clef with a key signature of one sharp (F#) and a 3/4 time signature. The score includes various musical notations such as notes, rests, and dynamic markings. Above the staves, there are handwritten annotations including "3", "VII", and "0". The notation includes slurs and ties.

Attus 7 - - - ->
0 4 2-2 1 0

137

Handwritten musical score for five staves in G major. The notation includes eighth and sixteenth notes, rests, and various dynamic markings such as *mf*, *f*, and *pp*. There are also performance instructions like *rit.* and *tr.* (trill). The score is marked with circled numbers 6, 8, and 2, and includes a double bar line with repeat dots.

Refrain

Cor. 4 Minore Subito

Handwritten musical score for three staves in D minor, starting with a 4/4 time signature. The notation includes quarter and eighth notes, rests, and dynamic markings such as *mf*, *f*, and *rall*. The score includes a double bar line with repeat dots and a circled number 10.

Pl. 5



Musical staff with treble clef, key signature of two sharps (F# and C#), and a common time signature. The music features a melodic line with eighth and sixteenth notes, and a bass line with chords. A *rall.* marking is present at the end of the staff.

Musical staff starting with the word *Finale* in a decorative script. It contains a series of chords and rhythmic patterns, primarily consisting of eighth and sixteenth notes.

Musical staff with treble clef, key signature of two sharps, and common time. It features a complex rhythmic pattern with many sixteenth notes. Handwritten annotations include $\frac{24}{72} = \frac{1}{3}$ and $\frac{15}{45} = \frac{1}{3}$.

Musical staff with treble clef, key signature of two sharps, and common time. It contains a series of chords and rhythmic patterns. A *ff* (fortissimo) marking is present.

Musical staff with treble clef, key signature of two sharps, and common time. It features a series of chords and rhythmic patterns.

Musical staff with treble clef, key signature of two sharps, and common time. A large section of the staff is circled and labeled *bis*. The music consists of chords and rhythmic patterns.

Musical staff with treble clef, key signature of two sharps, and common time. It features a series of chords and rhythmic patterns. Handwritten annotations include $\frac{1}{2}$, $\frac{1}{3}$, $\frac{1}{4}$, $\frac{1}{5}$, $\frac{1}{6}$, $\frac{1}{7}$, $\frac{1}{8}$, $\frac{1}{9}$, $\frac{1}{10}$, $\frac{1}{11}$, $\frac{1}{12}$, $\frac{1}{13}$, $\frac{1}{14}$, $\frac{1}{15}$, $\frac{1}{16}$, $\frac{1}{17}$, $\frac{1}{18}$, $\frac{1}{19}$, $\frac{1}{20}$, $\frac{1}{21}$, $\frac{1}{22}$, $\frac{1}{23}$, $\frac{1}{24}$, $\frac{1}{25}$, $\frac{1}{26}$, $\frac{1}{27}$, $\frac{1}{28}$, $\frac{1}{29}$, $\frac{1}{30}$, $\frac{1}{31}$, $\frac{1}{32}$, $\frac{1}{33}$, $\frac{1}{34}$, $\frac{1}{35}$, $\frac{1}{36}$, $\frac{1}{37}$, $\frac{1}{38}$, $\frac{1}{39}$, $\frac{1}{40}$, $\frac{1}{41}$, $\frac{1}{42}$, $\frac{1}{43}$, $\frac{1}{44}$, $\frac{1}{45}$, $\frac{1}{46}$, $\frac{1}{47}$, $\frac{1}{48}$, $\frac{1}{49}$, $\frac{1}{50}$, $\frac{1}{51}$, $\frac{1}{52}$, $\frac{1}{53}$, $\frac{1}{54}$, $\frac{1}{55}$, $\frac{1}{56}$, $\frac{1}{57}$, $\frac{1}{58}$, $\frac{1}{59}$, $\frac{1}{60}$. A *Rall.* marking is present.

Musical staff with treble clef, key signature of two sharps, and common time. It features a series of chords and rhythmic patterns.

meel

Handwritten musical score for guitar, consisting of six staves of music in treble clef with a key signature of one sharp (F#). The notation includes various rhythmic patterns, slurs, and dynamic markings. The piece concludes with a double bar line and the word "Fine" written in cursive.



Caprice sur l'Air espagnol

La Cachucha

pour la Guitare seule

Map Cost. 13

Chiac

A single staff of handwritten musical notation in treble clef, starting with a 3/4 time signature and a key signature of one flat (Bb). The notation includes various rhythmic patterns and slurs.