

La Source du Lyson par Nap. Coste Op. 47
Guitare 2^{do} par S. Pegon.

Introduction

The introduction consists of two staves. The upper staff is in treble clef with a key signature of one sharp (F#) and a common time signature (C). It begins with a 4-measure rest, followed by a series of chords and eighth notes. The lower staff is in bass clef and provides a harmonic accompaniment with chords and eighth notes.

The first system of the main piece continues the two-staff format. It features a 4-measure rest in the upper staff, followed by a melodic line with eighth notes and chords. The lower staff continues with a steady accompaniment.

The second system shows the continuation of the melody and accompaniment. The upper staff includes some sixteenth-note passages. The lower staff maintains the harmonic support.

Alarm. 7^{me} 8^{me} tant *Alarm.* *Cadenza 1^{me} Guit.*

The third system includes dynamic markings and performance instructions. The upper staff has a melodic line with some grace notes. The lower staff has a bass line. The system concludes with a cadenza for the guitar.

Andante sostenuto

The fourth system is marked 'Andante sostenuto'. The upper staff has a melodic line with a 3-measure rest, followed by eighth notes. The lower staff has a bass line with a 4-measure rest.

The fifth system continues the 'Andante sostenuto' section. The upper staff has a melodic line with eighth notes and a 4-measure rest. The lower staff has a bass line with a 4-measure rest.

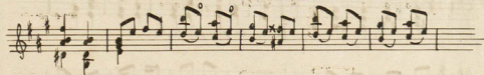
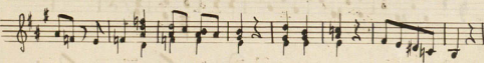
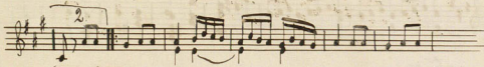
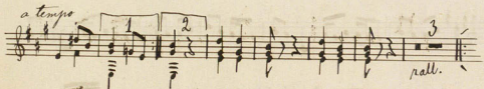
The sixth system continues the 'Andante sostenuto' section. The upper staff has a melodic line with eighth notes and a 4-measure rest. The lower staff has a bass line with a 4-measure rest.

cadenza *rallent.*

The seventh system concludes the piece with a cadenza and a 'rallent.' marking. The upper staff has a melodic line with eighth notes and a 4-measure rest. The lower staff has a bass line with a 4-measure rest.

a tempo

Ronde Villageois.
Allarghetto



Guitare Secondo

Harm. 1^{re} Guil.

1^{mo} tempo

