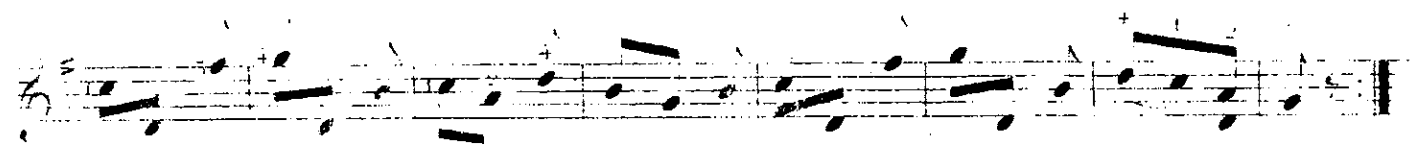
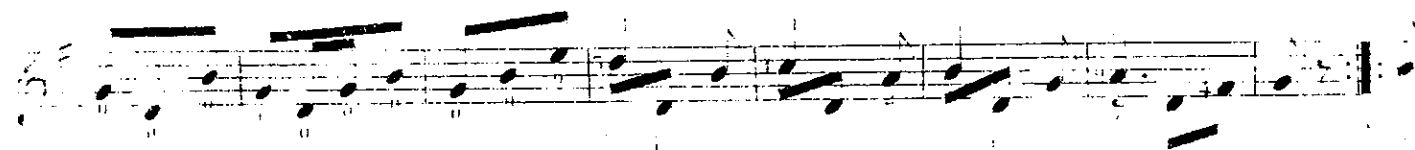
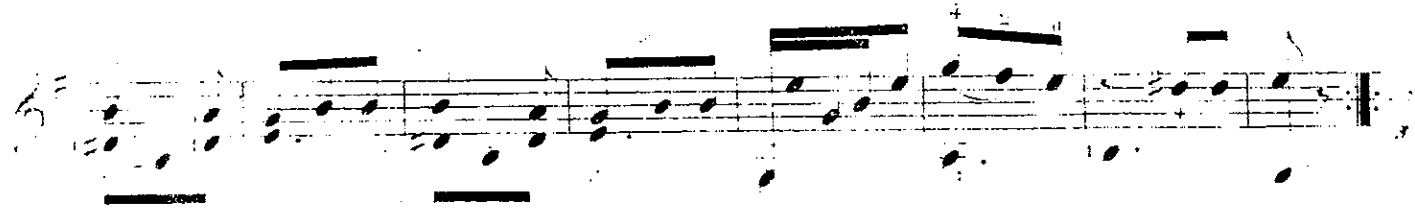
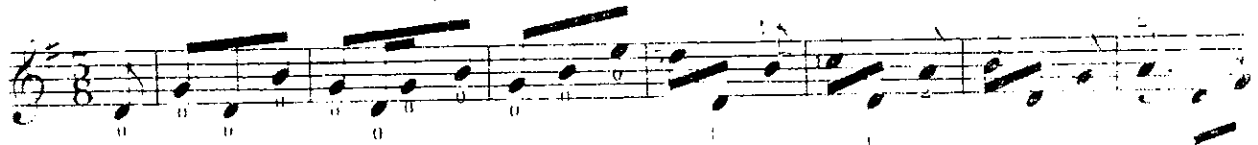




Nº 1.





№ 5.

This page of musical notation is for guitar, consisting of eight staves. The music is written in treble clef with a key signature of one sharp (F#). The first staff is marked with a '5' and a '3' in the time signature area, indicating a 5/8 or 3/8 time signature. The notation includes a variety of rhythmic patterns, such as eighth and sixteenth notes, and rests. Chord diagrams are indicated by numbers 1 through 7 above the notes. Fingerings are indicated by numbers 1 through 4 below the notes. The music is divided into measures by vertical bar lines, and the piece concludes with a double bar line and repeat dots at the end of the eighth staff.

Nº 4.

The image shows a page of musical notation for guitar, consisting of seven staves. The notation includes treble clefs, a key signature of one sharp (F#), and a 3/8 time signature. The music features a complex rhythmic pattern with many beamed eighth and sixteenth notes. Fingering numbers (1-5) are placed above or below notes. Bar lines and repeat signs are used throughout the piece.



196.